

Christchurch East School Newsletter



Vision/Purpose Statement

Nurturing Minds - Building Character - Creating Communities

Our Values

Excellence Equity Integrity Sense of Community
Te Hiranga Te Ririte Ngākau Pono Nohonga
Tahitanga

Strategic Goals

- 1 **Teaching and Learning** - *Nurturing Minds* - To provide relevant, engaging teaching and learning opportunities with strong links to our curriculum and the wider community
- 2 **Positive Education** - *Building Character* - To be characterised by positive culture / relationships within and beyond the school, based on our school values and approach
- 3 **Environment** - *Creating Communities* - To work towards site development, meeting the current and future needs of students, staff, parents and community

311 Gloucester Street
Christchurch Central City
Christchurch 8011
03 366 2440

www.chcheast.school.nz
admin@chcheast.school.nz

Term Dates

31.01.22 - 14.04.22
2.05.21 - 8.07.21
25.07.22 - 30.09.22
17.10.22 - 14.12.22

IMPORTANT DATES TO NOTE THIS TERM

Friday 9 September - Teacher Only Day - school closed
Tuesday 13 September - School Photos
Friday 19 September - School Photos postponement day
Friday 30 September - Last Day of Term 3
Monday 17 October - Term 4 begins
Wednesday 14 December - Last day of Term 4

ABSENCES

If your child/ren are not going to attend school you **must** advise the school office before 9am.

The school are required to follow up any unexplained absences.

There are a number of options to advise us of the absence

- Use your **HERO** account
- **Leave a message** on the absence line ph 366 2440
- Use the **skool loop** app
- **Email** - admin@chcheast.school.nz

Thanks for your cooperation.

Week 6 Term 3 2022

Christchurch East School Newsletter

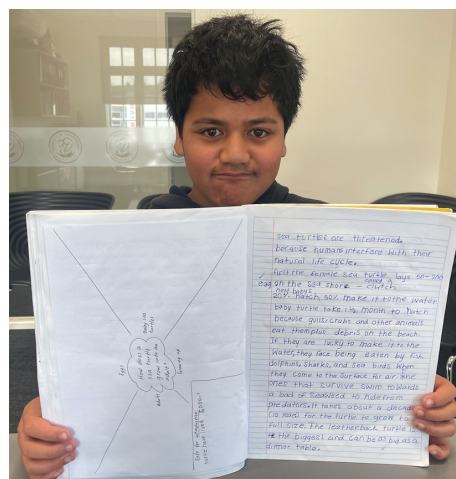


A MESSAGE FROM THE PRINCIPAL

Kia ora koutou,

As we move into the beginning of spring, it is great to have warmer days and increasing longer hours. We are enjoying it here at school and I trust it is the same for you and your whanau. A big congratulations to our newly formed **Jump Jam team**, the 'Christchurch Crusaders' on being selected to represent the school at the national competition. This achievement is a direct reflection and result of the students and staffs hard work and commitment. **Tino pai to mahi!**

In the learning hubs the great programmes are continuing and every fortnight we celebrate students who have been '**Learning with Heart**'. At Christchurch East, Learning with Heart is recognised in two overarching areas. One of this focuses is '**Living the Values**' and the second is showing the '**C+O+O+L Factor**' which stands for **C**hildren taking **O**pportunities to **O**wn their **L**earning. This is what we are all about at Christchurch East!



I am sure you will be following the news where there is talk about possible moves in the Covid levels to Green. While we would welcome any changes we will as always be waiting for official confirmation and ensuring any changes our board make are well considered, communicated and implemented in the best possible way.

Christchurch East School Newsletter



A MESSAGE FROM THE PRINCIPAL

We have rescheduled our **school photos** to September 13th so we can have them outside so students will not need to wear masks. If the weather is not good on that day we have a postponement day booked for the 16th. Fingers crossed these plans work out as it would be a shame to not have class photos this year.

A huge thank you to all parents who contributed to our recent consultation. The feedback will be reviewed by the **board of trustees**, relevant changes made to the school strategic plan and also shared with staff and community in due course. Thank you all for your input into this process.

We have so many great things happening here at school, please remember to check the HERO site and the school facebook page to hear about these and more.

Finally, a reminder to check the school calendar for the final **Teacher Only Day** for term three scheduled (**Friday 9th of September**). Thank you for your ongoing support to help these happen.

Again, thank you all for your continued support of the staff and school, keep safe and stay well, I look forward to seeing you at the gate.

Ngā mihi nui,
Mike



Week 6 Term 3 2022

Christchurch East School Newsletter



TERM DATES 2023

Monday 30 January 2023 - Thursday 6 April 2023

Monday 6 February - Waitangi Day (School Closed)

Friday 7 April - Good Friday (School Closed)

Monday 24 April 2023 - Friday 30 June 2023

Tuesday 25 April - ANZAC Day (School Closed)

Monday 5 June - Queen's Birthday (School Closed)

Monday 17 July 2023 - Friday 22 September 2023

Friday 12 August - Teacher Only Day - school closed

Friday 9 September - Teacher Only Day - school closed

Monday 9 October 2023 - Thursday 14 December 2023

Monday 23 October - Labour Day (School Closed)

Friday 17 November - Canterbury Anniversary Day (School Closed)

Please note - You will be advised of any teacher only days scheduled during 2023 closer to the time. This may affect the end of year finish date. This will be communicated via our website, newsletter , Facebook and skool loop app.

Christchurch East School Newsletter



TEAM KAURI NEWS

JUMP JAM CHCH EAST CRUSADERS

Miss Williams and Miss Kumar are proud to present our Jump Jam team- Christchurch East Crusaders.

For the past 3 weeks, 11 students from Kauri have been working hard on a dance routine to enter the 2022 Jump Jam competition.

These students have put in an incredible amount of effort and commitment to their dance and have just entered the first round of competitions! We are very proud of you and are sure we will make it to regionals!

Go Christchurch East Crusaders!



Weekly Sport



Each Friday during sport, one of our Kauri team classes heads down to the red zone for a different type of physical activity! Our tamariki are giving back to the community by weeding, clearing and planting in our red zone area.



Kapa Haka

Our Kapa Haka group continues to work hard in preparation for Tūhono in November! Our leaders have shown great skill, tenacity and mana.



Week 6 Term 3 2022

Christchurch East School Newsletter



TEAM KAURI NEWS



Our talented Jump Jam crew run by Miss Williams and Miss Kumar have made it through to the Nationals and will be competing later this year. We'll keep you posted!



As part of our Health and PE programme, we are running circuits sessions twice a week. Students are enjoying challenging themselves to improve their fitness.

Week 6 Term 3 2022

Christchurch East School Newsletter



ART NEWS

Team Kauri Art Success:

Our Art Restoration team have completed another art panel. The rotten wood has been removed, peeling paint sanded back and the art work has been repainted to its former glory. It is back on the fence behind the playground. Great team effort everybody!



Some of our Restoration team: Left to right: Rayna Reddy, Aisha Pal, Ruby McNabb-Hill, Amber Yates, Audrey Perez, Shylin Chand

Kauri & Koru Panel Project

A selection of Kauri & Koru students are working on our next panel. Koru are leading the way with support from their Kauri buddy. They have made a fantastic start.



Christchurch East School Newsletter



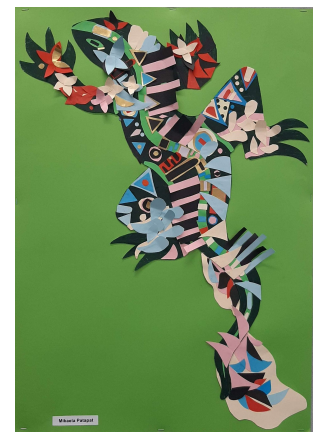
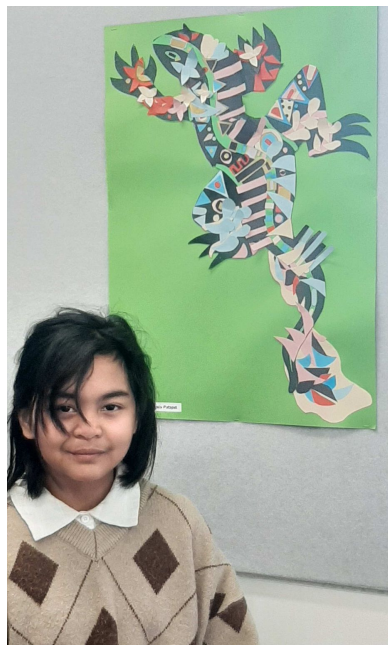
ART NEWS

Team Kauri: Applied Decoration Project

More Tuataras, this time from team Kauri. Students looked at the work of New Zealand /Pacifica artist Michel Tuffery and Austrian artist Gustav Klimt. Students explored patterns and the use of colour. They then painted and decorated their own tuatara. Students displayed both creativity & perseverance. The results are outstanding!



Left to right: Audrey Perez, Manaia Takau-Roberts, Hannah Ca-ang and Rayna Ram,



Come and see
Mikaela Patapat's
lovely work in the
office reception.

Christchurch East School Newsletter



COMMUNITY NOTICES



**WE ARE NOW OPEN
FOR
2022 ENROLMENTS**

**Do you work, live or study in our
City Centre?**

Hagley Community Preschool might be just
what you are looking for.



- A safe, caring, homely environment for 0-6 year olds.
- Community based, non-profit and culturally diverse
- 20hrs ECE and childcare subsidies, small group sizes, high adult to child ratios
- 500m from Christchurch Hospital in the grounds of Hagley College off Waller Terrace

CONTACT:

phone: (03) 364 5158

email: preschool@hagley.school.nz

web: www.hagleypreschool.co.nz

We'd love you to join our community!

Tuning in to Kids

Emotionally Intelligent Parenting

A six session parenting programme for
parents of children aged 4 – 12 years

Would you like to learn how to:

- be better at talking with your child?
- be better at understanding your child?
- help your child learn to manage their emotions?
- help to prevent behaviour problems in your child?
- teach your child to deal with conflict?

Tuning in to Kids shows you how to help your child develop emotional intelligence.
Children with higher emotional intelligence:

- have greater success with making and keeping friends
- have better concentration at school
- are more able to calm down when upset or angry
- tend to have fewer childhood illnesses

Emotional intelligence may be a better predictor of academic and career success than IQ!

Where: **44 Bealey Avenue**

When: **Fridays, 16th September- 4th November**
(2 week break for school holidays)

Time: **09:30AM - 12:00PM**

Facilitators: **Whitney and Nicole**

Contact: nicoleb@psusi.org.nz
0277125927



	SHIRLEY TENNIS CLUB 2022/23 JUNIOR TENNIS Season starts 3 Sept 2022	
9 COURTS (4 hard court and 5 synthetic) FLOODLIGHTS on 6 COURTS!	 	SHIRLEY TENNIS CLUB TENNIS CANTERBURY CLUB OF THE YEAR 2019/20
IF YOU CAN'T MAKE OPENING DAY, JUST COME ALONG ON YOUR NEXT AVAILABLE SATURDAY		
8 AND UNDER BOYS/GIRLS: 9.00AM - 10.00AM		
9 YEARS AND OVER BOYS/GIRLS: 10.00AM - 11.15AM		
PROFESSIONAL COACHING PROVIDED AS PART OF ANNUAL SUBSCRIPTION (\$140)		
FOR FURTHER INFORMATION PLEASE CONTACT - WAYNE TURNER - JUNIOR ADMINISTRATOR (385-3320) or email wayne.turner1@xtra.co.nz www.shirleytennis.co.nz		

Week 6 Term 3 2022