

Christchurch East School Newsletter



Vision/Purpose Statement

Nurturing Minds - Building Character - Creating Communities

Our Values

Excellence	Equity	Integrity	Sense of Community
Te Hiranga	Te Ririte	Ngākau Pono	Nohonga Tahitanga

Strategic Goals

- 1 **Teaching and Learning** - *Nurturing Minds* - To provide relevant, engaging teaching and learning opportunities with strong links to our curriculum and the wider community
- 2 **Positive Education** - *Building Character* - To be characterised by positive culture / relationships within and beyond the school, based on our school values and approach
- 3 **Environment** - *Creating Communities* - To work towards site development, meeting the current and future needs of students, staff, parents and community

311 Gloucester Street
Christchurch Central City
Christchurch 8011
03 366 2440

www.chcheast.school.nz
admin@chcheast.school.nz

Term Dates

31.01.22 - 14.04.22
2.05.21 - 8.07.21
25.07.22 - 30.09.22
17.10.22 - 14.12.22

IMPORTANT DATES TO NOTE THIS TERM

Monday 6 June - Queen's Birthday - School Closed

Friday 24 June - Matariki - School Closed

Tuesday 28 June - 3 Way Learning Conferences **3.15 - 5.15pm**

Wednesday 29 June - 3 Way Learning Conferences **12.45 - 5.30pm**
(School finishes 12.30pm)

Thursday 7 July - School Photos

Friday 8 July - Last Day of Term 2

Monday 25 July - First Day of Term 3

CLOTHING

Do you have any clothing that your child / children have grown out of and no longer have a use for?

We would love any items to be donated to the school for use when a student requires a change of clothing.

Any clean clothing items can be sent to the office.

Thank you

ABSENCES

If your child/ren are not going to attend school you **must** advise the school office before 9am.

The school are required to follow up any unexplained absences.

There are a number of options to advise us of the absence

- Use your **HERO** account
- **Leave a message** on the absence line ph 366 2440
- Use the **skool loop** app
- **Email** - admin@chcheast.school.nz

Thanks for your cooperation.

Week 6 Term 2 2022

Christchurch East School Newsletter



A MESSAGE FROM THE PRINCIPAL

Kia ora koutou,

Hopefully everyone had an enjoyable long weekend over Queen's Birthday. We appreciate your support by keeping your children home last Thursday and Friday as we continue to manage high levels of staff illness. While only a small number of staff are on Covid related leave at any one time, we are really feeling the impact of other illnesses with similar symptoms that prevent staff from being at work. This pressure only increases with the extreme nationwide shortage of relief teachers available. We will continue to do our best to manage this as it is an ongoing problem, but are really thankful for your ongoing support.

Today a paper notice will come out about our **three way learning conferences** later this term. Our leadership team have done a lot of work to ensure we are still able to have these important connection points with your child's homeroom teacher. For some of you this may be your first opportunity to finally look around the new teaching spaces. We have had to run the conferences a little differently this year in line with **COVID protocols** so please make sure you read, complete and return the notice, and also make the online booking.

While I have not had the opportunity this week to celebrate important members of our staff team, I would like to acknowledge it is **Support Staff Week**. We have an amazing bunch of support staff including our caretaker Ani, our office staff of Catherine and Sue and our amazing learning assistants Karena, Mere, Barbs and Karen. Our Support Staff make a huge contribution to our teaching and learning programmes every day and we are so grateful to have them. I will look forward to doing something for them next week but wanted to acknowledge them in today's newsletter.

Again, thank you all for your continued support of the staff and school, keep safe and stay well, I look forward to seeing you at the gate.

Ngā mihi nui,
Mike

Christchurch East School Newsletter



ART NEWS

KAURI WORK

Kauri Art Restoration

Our restoration groups are doing a fantastic job revitalising the tired art panels that hang on the fence by the playground



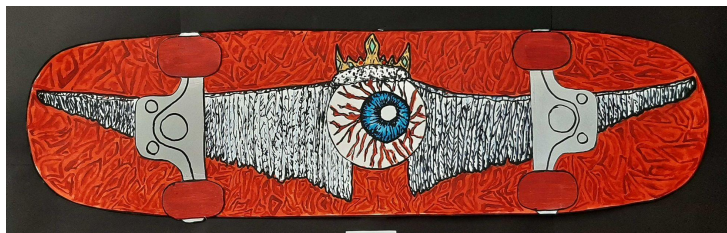
Panel 1 Restoration Team:
Maru, Manaia, Framie, Kiara,
Keagan, Mikaela, Aurora, Mathew



Panel 2 & 3 well under way

Week 6 Term 2 2022

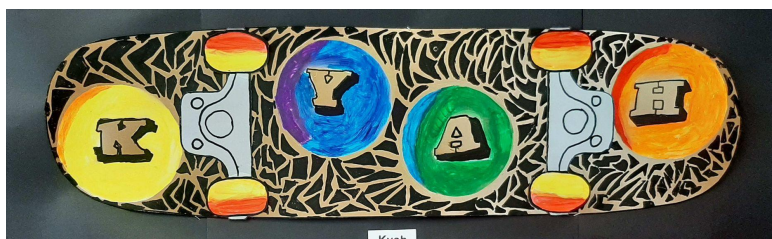
Kauri Skateboard design: 25 students took up the challenge of designing and painting a skateboard deck. The results were outstanding as you can see!



Ari, Ayla, Trishant, Jacob H, Amber, Shanelle & Audrey



Vasiiti, Hayley, Akina, Vince and Vanda



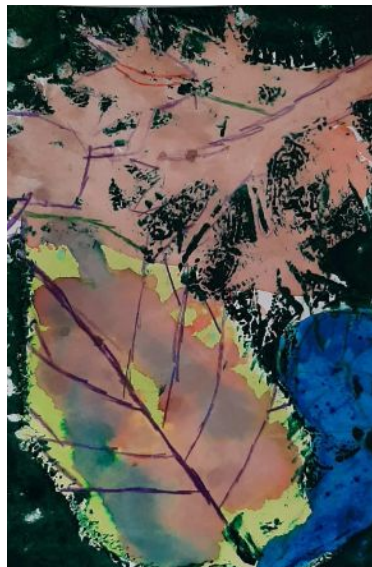
Clockwise from the bottom: Kyah, Simone, Shanelle, Ishant and Tyler



Tanvir Rao



Above left:
Zahra
Selvam-Lyne



Above right::
Damian
Mandri



Right:
Saina
Khatun

A selection of work from our talented Harakeke Artists



Abi Hewlett



Jayden Biswa

Christchurch East School

Newsletter



POLICIES UNDER REVIEW - SCHOOL DOCS

- **Medicines**
- **Managing Minor/Moderate Injury**
- **Managing Serious Injury and Illness**
- **Infectious Diseases**
- **Bullying and Online Bullying**
- **Surrender and Retention of Property and Searches**



To review the policy and make comments

1. Visit the Christchurch East School SchoolDocs© website [here](#).
2. Enter the user name (chcheast) and password (heart).
3. Follow the link to the relevant policy as listed above.
4. Read the policy.
5. Click the Red Policy Review button at the right hand top corner of the page. A new screen will appear.
6. Select the reviewer type "Parent".
7. Enter the password "pin".
8. Enter your name (optional).
9. Submit your ratings and comments.

If you don't have internet access, school office staff will easily provide you with printed copies of the policy and the review form. It would be helpful if this review was completed by 30 June 2022.

SCHOOL ACCOUNTS

The 2022 student stationery charge of \$30.00 has been placed on your child's account.

For students in Year 7 and 8 there is also a materials charge for technology. In 2022 this is \$60.00.

To view your account please log in to your child's HERO account.

You are able to pay by **cash or internet banking**. Our bank account number is 12-3148-0011877-00. Please quote your child's family name and first name. You may wish to make smaller regular payments over the school year, pay the invoice in full or pay on a term-by-term basis. If you have any questions please do not hesitate to contact the school office.

Thank you to all families who have made payments.



Week 6 Term 2 2022

Christchurch East School Newsletter



DENTAL VISIT

Canterbury

District Health Board

Te Poari Hauora o Waitaha

COMMUNITY
dental service

Free Dental Care for Children - including special information regarding Year 8 students

One of our Community Dental Service vans will be making a visit to your school soon.

- **Only the children who currently require a check-up will be seen at this visit.**
Please do not be concerned if your child is not called for a check-up this time.
- The dental therapist will provide a regular check-up and preventative care which may include:
 - Cleaning/Scaling (to remove plaque from teeth)
 - Dental x-rays (to check for decay in teeth, or presence and position of teeth)
 - Fluoride Varnish (painted on teeth to help prevent decay)
 - Fissure Sealants (coating put on teeth to prevent decay) if required.
- If your child requires any other dental care, they will bring home a 'Care Plan' which will explain what dental care and appointment times are required.
- When you receive the 'Care Plan' please contact our **Call Centre as soon as possible** as you will need to arrange a time to bring your child to one of our Community Clinics for this dental care.
- Please contact our Call Centre if you want further information on the Community Dental Service, to enrol your child or if you have any specific questions about your child's dental care (a dental therapist will call you back)
- **Year 8 students:** all year 8 students enrolled with the Community Dental Service are transferred from the Community Dental Service to a FREE private dentist from year 9 until their 18th birthday. To help with this transition please ensure you have informed your child of their family dentist (not orthodontist). This will enable us to transfer your child onto the correct dentist for year 9 onwards. More information will be sent home after their year 8 check-up.

To contact our Call Centre: phone 0800 846 983 / email commdental@cdhb.health.nz

Week 6 Term 2 2022

Christchurch East School Newsletter



COMMUNITY NOTICES

Swords, spam, cheerleaders, spam, singing, spam and did I mention spam - a lot?

The best Kidsfest activity this July is the hilarious kids version of the Broadway hit musical MONTY PYTHON'S SPAMALOT YOUNG@PART.

Specifically adapted by Eric Idle for kids to perform to kids, this wonderfully wacky adventure of King Arthur and his Knights of the Round Table is based on the film Monty Python and the Holy Grail. There's outstanding singing, dancing, prancing with coconuts, French taunting and of course the Knights of Ni! As the Knights journey on their search for the holy grail they come to realise that the grail is about finding that thing that truly feeds your soul. From swords to cheerleaders there's something for everyone in this one hour adaption.

You'd be crazy to miss it!. Tickets \$15. At Nasda Theatre during Kidfest these July Holidays!

Bookings <https://events.humanitix.com/spamalat-young-part>

Christchurch Envirokids

UPCOMING EVENTS

JUNE Anytime from 10AM -3PM
Location: Kiosk in Christchurch Botanic Gardens
All Events are FREE!

- 4** **Natural Environments**
Come learn more about how volcanos and earthquakes disrupt our natural environment
- 11** **Under The Sea**
Envirokids will be learning about all parts of Ecology ahow this relates to marine life and their environments
- 18** **2042: New Zealand**
What will New Zealand's climate look like in the year 2042? Come and answer this question and bring your ideas!
- 25** **Let It Bloom**
Come explore the Botanic Gardens and identify different flowers and come and get a prize at the end of your trail.

f For more information, @chchenvirokids