

Christchurch East School Newsletter



Vision/Purpose Statement

Nurturing Minds - Building Character - Creating Communities

Our Values

Excellence Equity Integrity Sense of Community
Te Hiranga Te Ririte Ngākau Pono Nohonga
Tahitanga

Strategic Goals

- 1 **Teaching and Learning** - *Nurturing Minds* - To provide relevant, engaging teaching and learning opportunities with strong links to our curriculum and the wider community
- 2 **Positive Education** - *Building Character* - To be characterised by positive culture / relationships within and beyond the school, based on our school values and approach
- 3 **Environment** - *Creating Communities* - To work towards site development, meeting the current and future needs of students, staff, parents and community

311 Gloucester Street
Christchurch Central City
Christchurch 8011
03 366 2440

www.chcheast.school.nz
admin@chcheast.school.nz

Term Dates

31.01.22 - 14.04.22
2.05.21 - 8.07.21
25.07.22 - 30.09.22
17.10.22 - 14.12.22

IMPORTANT DATES TO NOTE THIS TERM

Monday 26 September - School Closed – Public Holiday
Friday 30 September - Last Day of Term 3
Monday 17 October - Term 4 begins
Wednesday 14 December - Last day of Term 4

ABSENCES

If your child/ren are not going to attend school you **must** advise the school office before 9am.

The school are required to follow up any unexplained absences.

There are a number of options to advise us of the absence

- Use your **HERO** account
- **Leave a message** on the absence line ph 366 2440
- Use the **skool loop** app
- **Email** - admin@chcheast.school.nz

Thanks for your cooperation.

Week 8 Term 3 2022

Christchurch East School

Newsletter



A MESSAGE FROM THE PRINCIPAL

Kia ora koutou,

Well this fortnight has been a very eventful period with a lot happening nationally and internationally which has a direct effect on life and learning at Christchurch East School.

Firstly, as you will be aware, the Government made the decision to retire the COVID -19 traffic light system. I trust you all received the notice we posted on HERO on Tuesday morning about what this means for us at Christchurch East School. In short, the biggest change that we implemented immediately was no longer requiring masks to be worn inside. While I appreciated our government's proactive approach to keep our nation and most vulnerable people safe, it is great to see everyone's faces and smiles again. At this stage the Board, Leadership team and staff will take the rest of this term to review the documentation we are slowly receiving to guide us around these decisions and will not look to make any further changes until next term. Thank you for your patience as we look to update all our forms of communication, including our school website. Final implementation of the changes will be considered and approved by our Board of Trustees.

At an international level, last week saw the passing of Queen Elizabeth II. New Zealand will mark the passing of Queen Elizabeth II with a one-off public holiday on Monday 26 September 2022. This means that all state and state-integrated schools and kura (including Christchurch East School) will be closed on this day. I trust you enjoy some quality whanau time and pay your respects in a manner that is appropriate to your whanau.

Back to life and learning here at Christchurch East, it was great to have school photos earlier this week. We have the Christchurch City Council Team coming in this week and next to run the Cycle Safety programme with our Year 6 students. This is a valuable programme, which is a real priority for our students to learn how to stay safe on our busy inner city streets while riding their bikes. Next week we also have our Market Day event run by our students, for our students and this finishes off their "lets get down to business" unit of learning. I know the last one we had two years ago was a real highlight.

As we move into the beginning of spring, it is great to have warmer days and increasingly longer daylight hours. We are enjoying it here at school and I trust it is the same for you and your whanau. A big congratulations to our newly formed Jump Jam team, the 'Christchurch Crusaders' on being selected to represent the school at the national competition. This achievement is a direct reflection and result of both student and staffs hard work and commitment. Tino pai to mahi!

Week 8 Term 3 2022

Christchurch East School

Newsletter



In the learning hubs the great programmes are continuing and every fortnight we celebrate students who have been 'Learning with Heart'. At Christchurch East, Learning with Heart is recognised in two overarching areas. One of these focuses is 'Living the Values' and the second is showing the 'C+O+O+L Factor' which stands for **C**hildren **t**aking **O**pportunities to **O**wn their **L**earning. This is what we are all about at Christchurch East!

We have so many great things happening here at school, please remember to check the HERO site and the school facebook page to hear about these and more.

Again, thank you all for your continued support of the staff and school, keep safe and stay well, I look forward to seeing you at the gate.

Ngā mihi nui,
Mike



Week 8 Term 3 2022

Christchurch East School Newsletter



TERM DATES 2023

Monday 30 January 2023 - Thursday 6 April 2023

Monday 6 February - Waitangi Day (School Closed)

Friday 7 April - Good Friday (School Closed)

Monday 24 April 2023 - Friday 30 June 2023

Tuesday 25 April - ANZAC Day (School Closed)

Monday 5 June - Queen's Birthday (School Closed)

Monday 17 July 2023 - Friday 22 September 2023

Friday 12 August - Teacher Only Day - school closed

Friday 9 September - Teacher Only Day - school closed

Monday 9 October 2023 - Thursday 14 December 2023

Monday 23 October - Labour Day (School Closed)

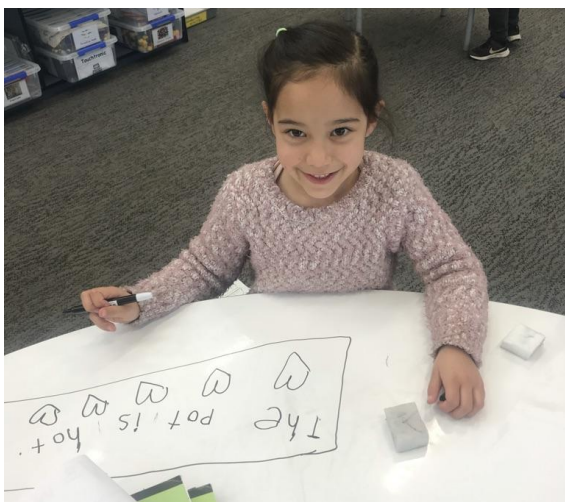
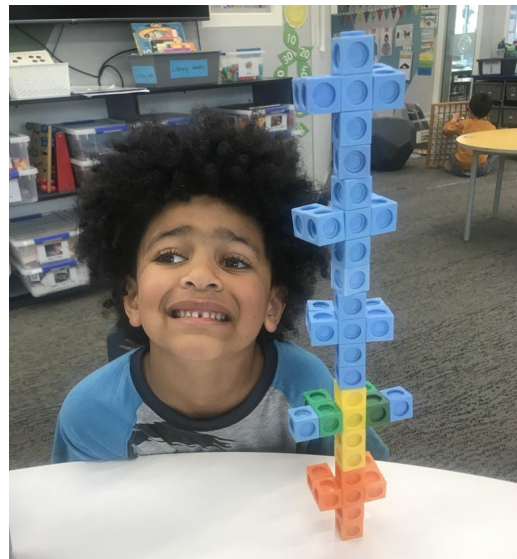
Friday 17 November - Canterbury Anniversary Day (School Closed)

Please note - You will be advised of any teacher only days scheduled during 2023 closer to the time. This may affect the end of year finish date. This will be communicated via our website, newsletter , Facebook and skool loop app.

Christchurch East School Newsletter



TEAM KORU NEWS



Some of the cool activities happening
in Team Koru every day:-)

Week 8 Term 3 2022

Christchurch East School

Newsletter

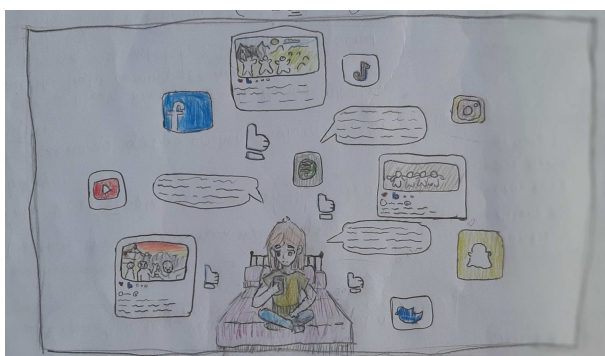


ART NEWS

This week we are celebrating our artists participating in projects outside of Christchurch East.

Goodluck to these artists!

Recently we had a group of artist submit mural or sculpture designs to SCAPE for their annual Re : Activate competition. The competition is open to youth aged between 5 and 18 in Canterbury. The students were asked to respond to a brief and submit their designs for the chance to have their work produced for public display. They explored complex themes based on Labour and the Body, Digital Identity or the Physical and Virtual World.



Mural design: 'Social Life?' Audrey Perez



Sculpture design: 'Tree of Work'
Liana Martin

Christchurch East School Newsletter



ART NEWS

Dioramas on display!

Last November 25 artists participated in an art workshop at Turanga. They made shoe box dioramas with artist Janet de Wagt in conjunction with NZ Heritage. Students worked with their own photos as well as historical photos to create their own stories within a shoe box.

After covid related delays these shoe boxes are finally going to be on display in an art exhibition during the school holidays!

Free children's art exhibition at Kate Sheppard House

1-8 October 2022 (First week school holidays except Mon-Tues)

Te Whare Waiutuutu Kate Sheppard House, 83 Clyde Rd, Ilam

Entry to exhibition is free. Open 10.00am - 4.00pm



Do you remember this??? After the exhibition the shoe boxes will be returned to the artists.

Week 8 Term 3 2022

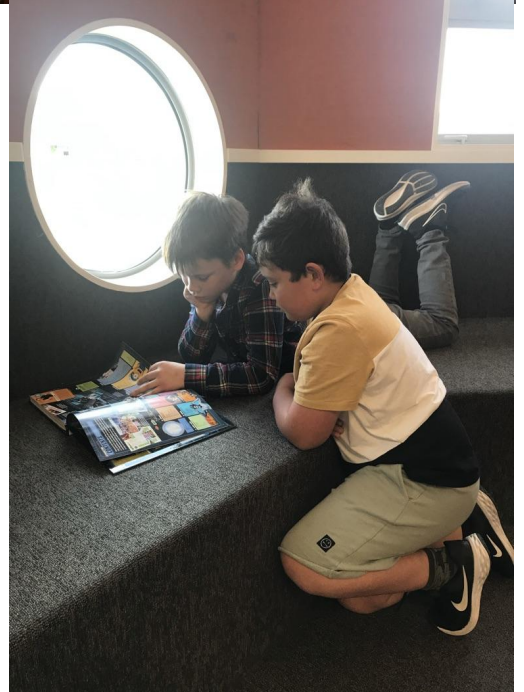


LIBRARY

**Open
Lunchtimes**

**Tuesday
Wednesday
Thursday**

**Tuesday
Chess Club**



Christchurch East School Newsletter



COMMUNITY NOTICES



**WE ARE NOW OPEN
FOR
2022 ENROLMENTS**

**Do you work, live or study in our
City Centre?**

Hagley Community Preschool might be just
what you are looking for.



- A safe, caring, homely environment for 0-6 year olds.
- Community based, non-profit and culturally diverse
- 20hrs ECE and childcare subsidies, small group sizes, high adult to child ratios
- 500m from Christchurch Hospital in the grounds of Hagley College off Waller Terrace

CONTACT:

phone: (03) 364 5158

email: preschool@hagley.school.nz

web: www.hagleypreschool.co.nz

We'd love you to join our community!

Tuning in to Kids

Emotionally Intelligent Parenting

A six session parenting programme for
parents of children aged 4 – 12 years

Would you like to learn how to:

- be better at talking with your child?
- be better at understanding your child?
- help your child learn to manage their emotions?
- help to prevent behaviour problems in your child?
- teach your child to deal with conflict?

Tuning in to Kids shows you how to help your child develop emotional intelligence.
Children with higher emotional intelligence:

- have greater success with making and keeping friends
- have better concentration at school
- are more able to calm down when upset or angry
- tend to have fewer childhood illnesses

Emotional intelligence may be a better predictor of academic and career success than IQ!

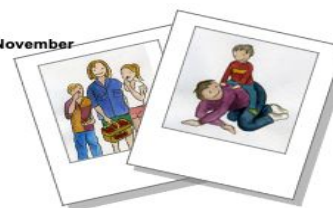
Where: 44 Bealey Avenue

When: Fridays, 16th September- 4th November
(2 week break for school holidays)

Time: 09:30AM- 12:00PM

Facilitators: Whitney and Nicole

Contact: nicoleb@psusi.org.nz
0277125927



OUR WORLD IN MINIATURE EXHIBITION

LABOUR WEEKEND

**22nd - 24th
OCTOBER**

10am to 4pm

**ADULTS - \$5
CHILD - GOLD COIN
CASH ONLY**

**SILHOUETTE
STUDIOS**

**6 SHEFFIELD CRESCENT
BURNSIDE CHCH**

NZ ASSOCIATION of MINIATURE ENTHUSIASTS

